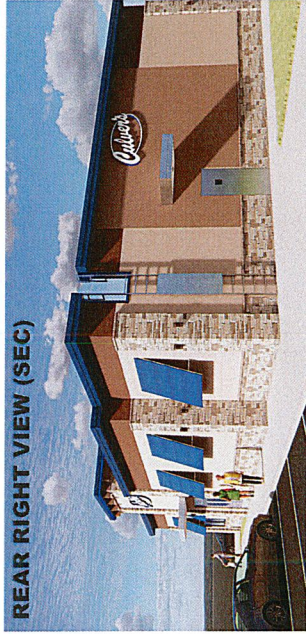


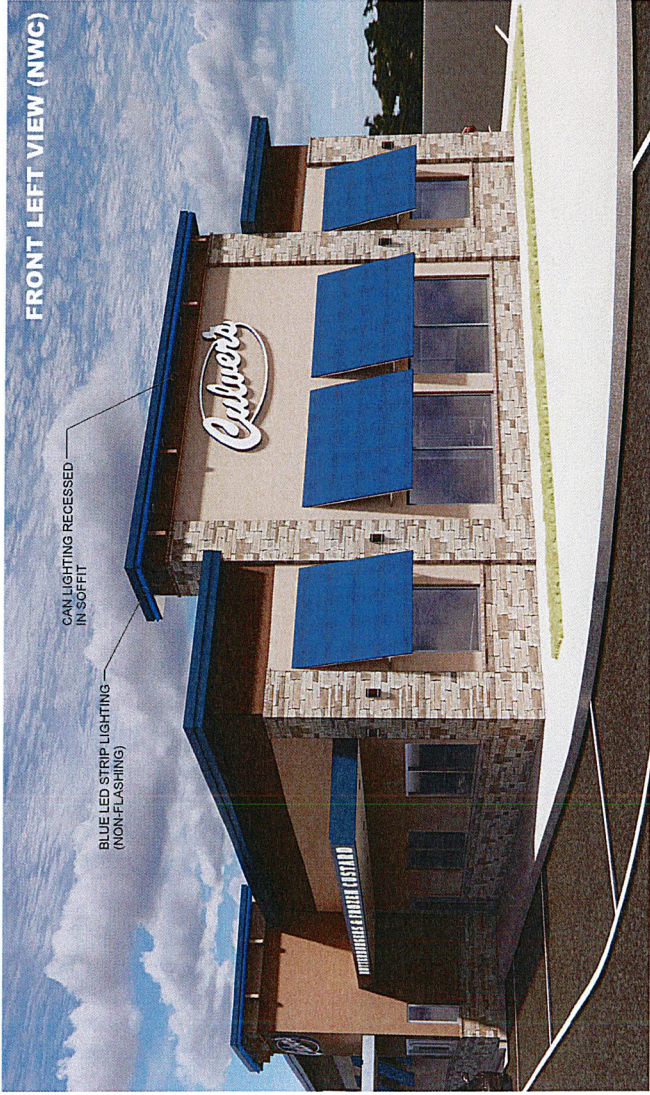
REAR LEFT VIEW (NEG)



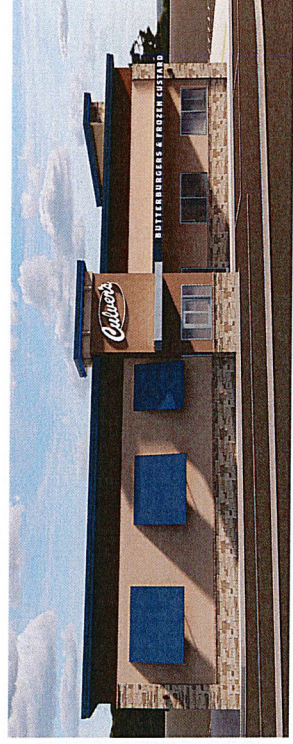
REAR RIGHT VIEW (SEC)



FRONT RIGHT VIEW (SWC)

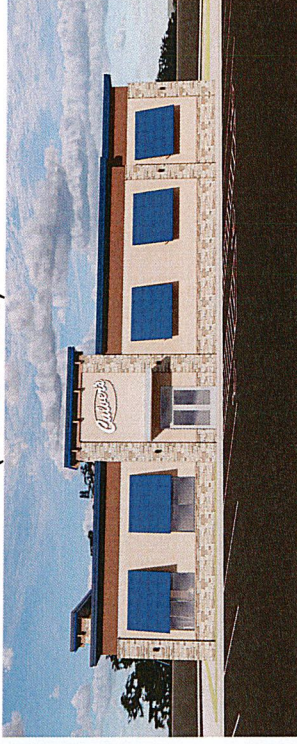


FRONT LEFT VIEW (NWC)



LEFT PERSPECTIVE (NORTH VIEW)

RIGHT PERSPECTIVE (SOUTH VIEW)



TYPICAL FINISHES AND COLORS DEPICITED; ACTUAL COLORS SELECTED MAY DIFFER

NEW CULVER'S RESTAURANT  
200 19th Ave. N  
Princeton, MN 55371  
County of SHERBURNE

**Culver's**  
Culver's Restaurant System, Inc.  
1240 Water Street  
Prairie du Sac, WI 53578  
608-643-7960

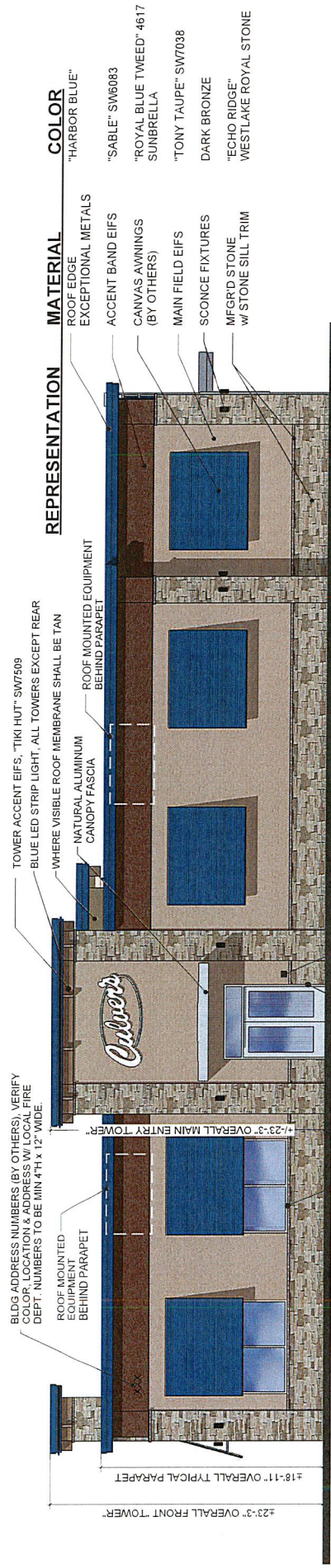
©2024

OLMANN ERNEST MARTIN ARCHITECTS  
200 South State Street  
Duluth, Illinois 61008  
815-544-7790 Phone

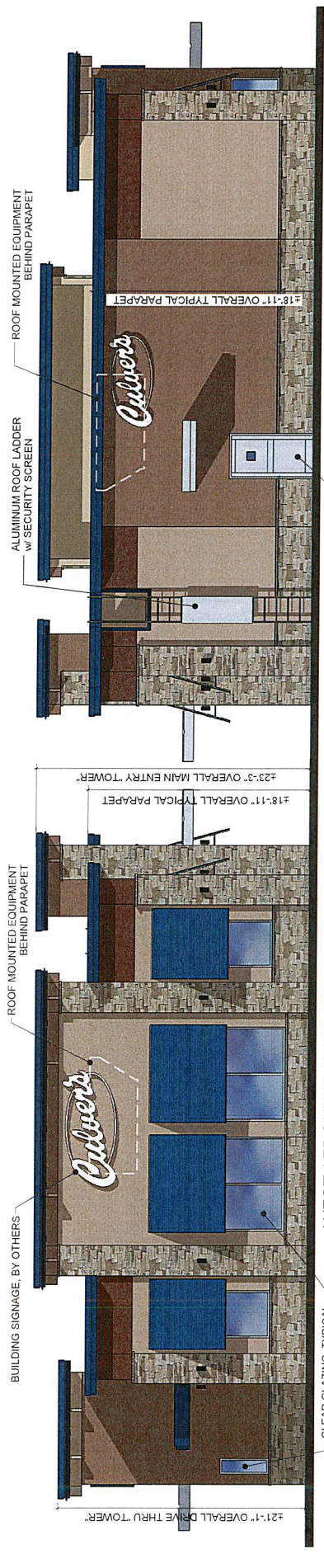
©2024

**3D IMAGES**  
NOTE: THOUGH THESE IMAGES HAVE PHOTO  
REALISTIC QUALITIES, THE ACTUAL BUILDING  
MATERIALS MAY VARY IN APPEARANCE.  
DATE: 4-5-2024  
DRAWN: FAWSON

A2



**SOUTH / MAIN ENTRY ELEVATION**



**WEST / FRONT ELEVATION**

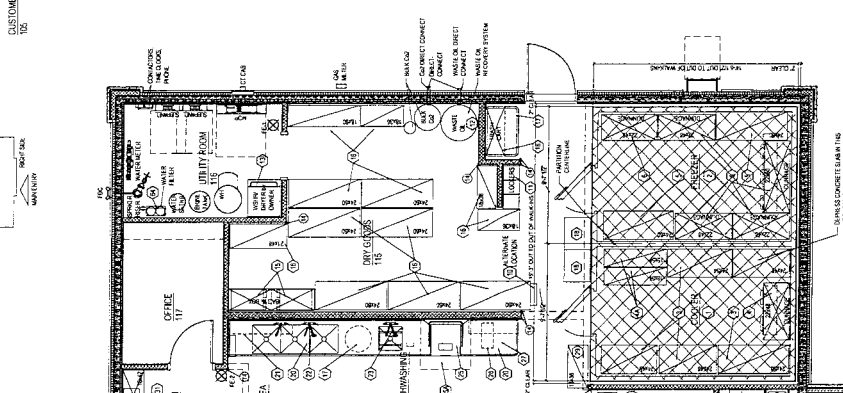
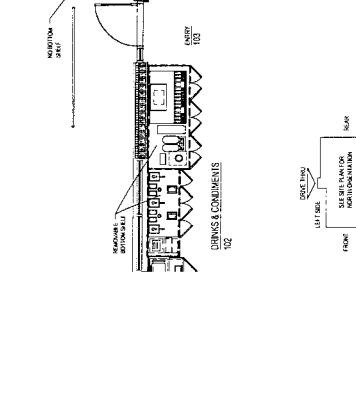
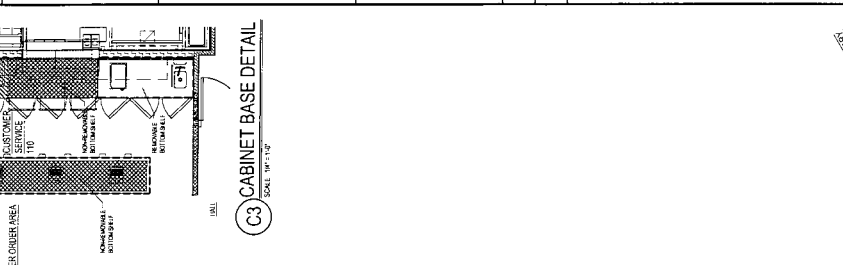
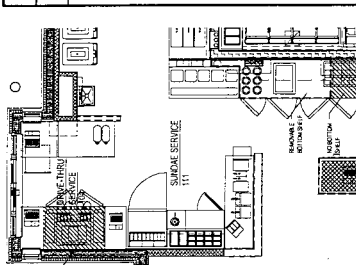


**NORTH / DRIVE THRU ELEVATION**

**EAST / REAR ELEVATION**

REPRESENTATION	MATERIAL	COLOR
ROOF EDGE	EXCEPTIONAL METALS	"HARBOR BLUE"
ACCENT BAND EIFS		"SABLE" SW6083
CANVAS AWNINGS (BY OTHERS)		"ROYAL BLUE TWEED" 4617
MAIN FIELD EIFS		SUNBRELLA
SCONCE FIXTURES		"TONY TAUPE" SW7038
MFG'RD STONE w/ STONE SILL TRIM		DARK BRONZE
		"ECHO RIDGE" WESTLAKE ROYAL STONE

**TYPICAL FINISHES AND COLORS DEPICTED; FINAL SELECTIONS MAY DIFFER**



ITEM	EQUIPMENT SCHEDULE
1	1/2" SS SINK
2	1/2" SS SINK
3	1/2" SS SINK
4	1/2" SS SINK
5	1/2" SS SINK
6	1/2" SS SINK
7	1/2" SS SINK
8	1/2" SS SINK
9	1/2" SS SINK
10	1/2" SS SINK
11	1/2" SS SINK
12	1/2" SS SINK
13	1/2" SS SINK
14	1/2" SS SINK
15	1/2" SS SINK
16	1/2" SS SINK
17	1/2" SS SINK
18	1/2" SS SINK
19	1/2" SS SINK
20	1/2" SS SINK
21	1/2" SS SINK
22	1/2" SS SINK
23	1/2" SS SINK
24	1/2" SS SINK
25	1/2" SS SINK
26	1/2" SS SINK
27	1/2" SS SINK
28	1/2" SS SINK
29	1/2" SS SINK
30	1/2" SS SINK

ITEM	EQUIPMENT SCHEDULE
31	1/2" SS SINK
32	1/2" SS SINK
33	1/2" SS SINK
34	1/2" SS SINK
35	1/2" SS SINK
36	1/2" SS SINK
37	1/2" SS SINK
38	1/2" SS SINK
39	1/2" SS SINK
40	1/2" SS SINK
41	1/2" SS SINK
42	1/2" SS SINK
43	1/2" SS SINK
44	1/2" SS SINK
45	1/2" SS SINK
46	1/2" SS SINK
47	1/2" SS SINK
48	1/2" SS SINK
49	1/2" SS SINK
50	1/2" SS SINK

ITEM	EQUIPMENT SCHEDULE
51	1/2" SS SINK
52	1/2" SS SINK
53	1/2" SS SINK
54	1/2" SS SINK
55	1/2" SS SINK
56	1/2" SS SINK
57	1/2" SS SINK
58	1/2" SS SINK
59	1/2" SS SINK
60	1/2" SS SINK
61	1/2" SS SINK
62	1/2" SS SINK
63	1/2" SS SINK
64	1/2" SS SINK
65	1/2" SS SINK
66	1/2" SS SINK
67	1/2" SS SINK
68	1/2" SS SINK
69	1/2" SS SINK
70	1/2" SS SINK
71	1/2" SS SINK
72	1/2" SS SINK
73	1/2" SS SINK
74	1/2" SS SINK
75	1/2" SS SINK
76	1/2" SS SINK
77	1/2" SS SINK
78	1/2" SS SINK
79	1/2" SS SINK
80	1/2" SS SINK

ITEM	EQUIPMENT SCHEDULE
81	1/2" SS SINK
82	1/2" SS SINK
83	1/2" SS SINK
84	1/2" SS SINK
85	1/2" SS SINK
86	1/2" SS SINK
87	1/2" SS SINK
88	1/2" SS SINK
89	1/2" SS SINK
90	1/2" SS SINK
91	1/2" SS SINK
92	1/2" SS SINK
93	1/2" SS SINK
94	1/2" SS SINK
95	1/2" SS SINK
96	1/2" SS SINK
97	1/2" SS SINK
98	1/2" SS SINK
99	1/2" SS SINK
100	1/2" SS SINK

ITEM	EQUIPMENT SCHEDULE
101	1/2" SS SINK
102	1/2" SS SINK
103	1/2" SS SINK
104	1/2" SS SINK
105	1/2" SS SINK
106	1/2" SS SINK
107	1/2" SS SINK
108	1/2" SS SINK
109	1/2" SS SINK
110	1/2" SS SINK
111	1/2" SS SINK
112	1/2" SS SINK
113	1/2" SS SINK
114	1/2" SS SINK
115	1/2" SS SINK
116	1/2" SS SINK
117	1/2" SS SINK
118	1/2" SS SINK
119	1/2" SS SINK
120	1/2" SS SINK
121	1/2" SS SINK
122	1/2" SS SINK
123	1/2" SS SINK
124	1/2" SS SINK
125	1/2" SS SINK
126	1/2" SS SINK
127	1/2" SS SINK
128	1/2" SS SINK
129	1/2" SS SINK
130	1/2" SS SINK

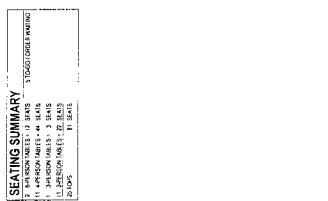
ITEM	EQUIPMENT SCHEDULE
131	1/2" SS SINK
132	1/2" SS SINK
133	1/2" SS SINK
134	1/2" SS SINK
135	1/2" SS SINK
136	1/2" SS SINK
137	1/2" SS SINK
138	1/2" SS SINK
139	1/2" SS SINK
140	1/2" SS SINK
141	1/2" SS SINK
142	1/2" SS SINK
143	1/2" SS SINK
144	1/2" SS SINK
145	1/2" SS SINK
146	1/2" SS SINK
147	1/2" SS SINK
148	1/2" SS SINK
149	1/2" SS SINK
150	1/2" SS SINK

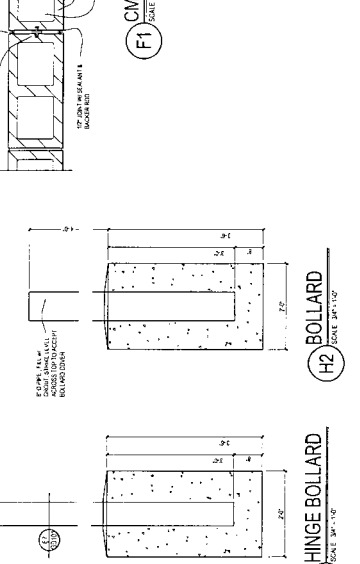
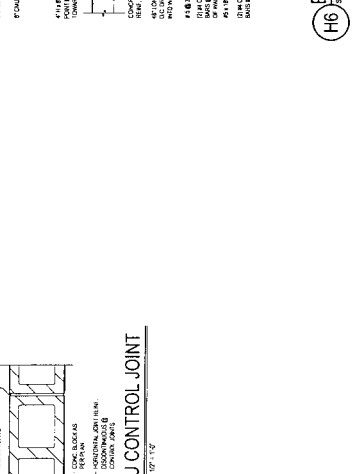
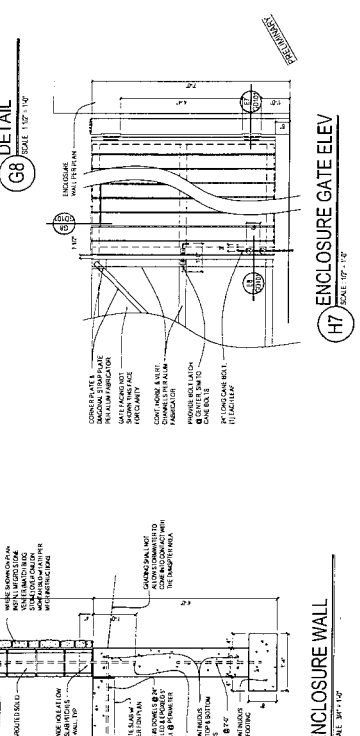
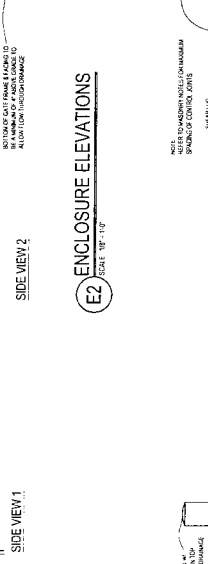
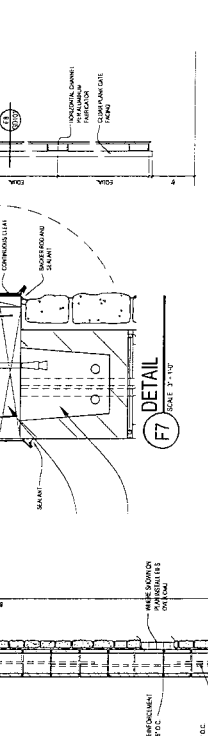
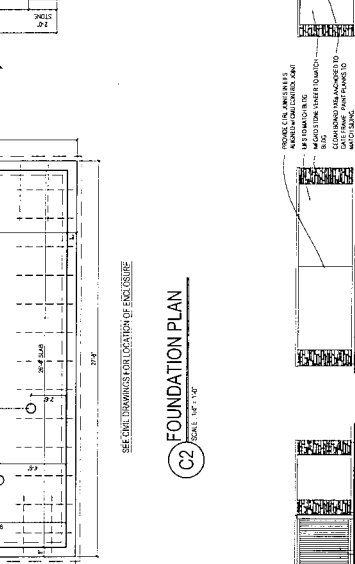
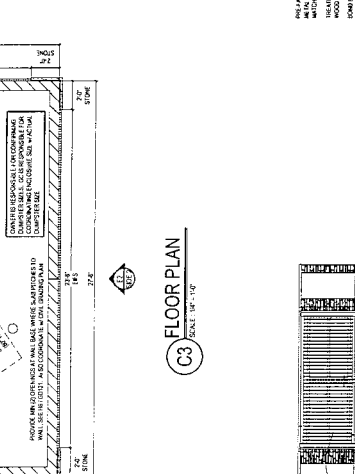
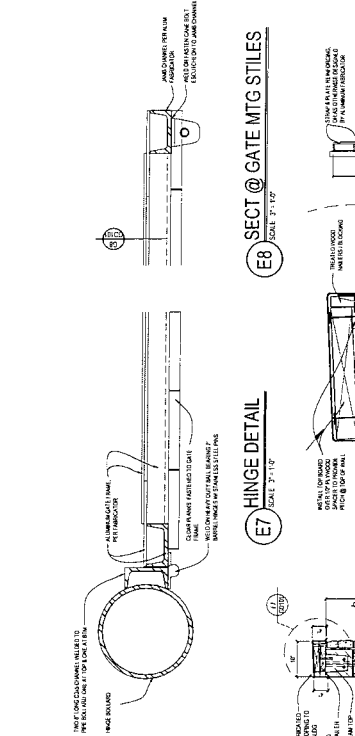
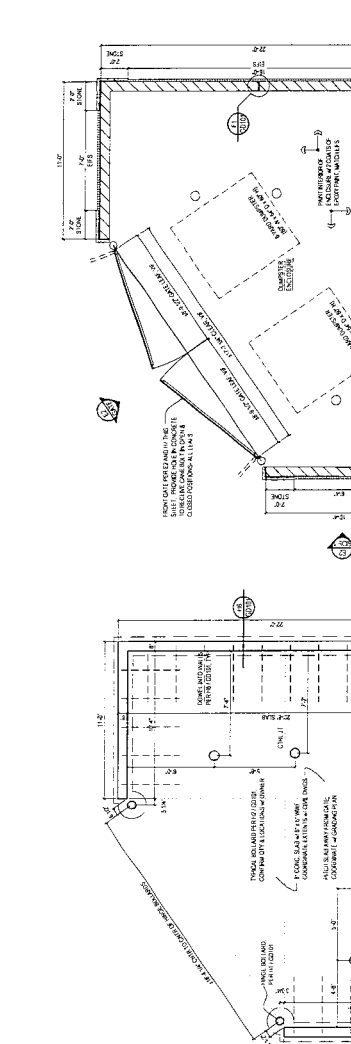
ITEM	EQUIPMENT SCHEDULE
151	1/2" SS SINK
152	1/2" SS SINK
153	1/2" SS SINK
154	1/2" SS SINK
155	1/2" SS SINK
156	1/2" SS SINK
157	1/2" SS SINK
158	1/2" SS SINK
159	1/2" SS SINK
160	1/2" SS SINK
161	1/2" SS SINK
162	1/2" SS SINK
163	1/2" SS SINK
164	1/2" SS SINK
165	1/2" SS SINK
166	1/2" SS SINK
167	1/2" SS SINK
168	1/2" SS SINK
169	1/2" SS SINK
170	1/2" SS SINK

ITEM	EQUIPMENT SCHEDULE
171	1/2" SS SINK
172	1/2" SS SINK
173	1/2" SS SINK
174	1/2" SS SINK
175	1/2" SS SINK
176	1/2" SS SINK
177	1/2" SS SINK
178	1/2" SS SINK
179	1/2" SS SINK
180	1/2" SS SINK
181	1/2" SS SINK
182	1/2" SS SINK
183	1/2" SS SINK
184	1/2" SS SINK
185	1/2" SS SINK
186	1/2" SS SINK
187	1/2" SS SINK
188	1/2" SS SINK
189	1/2" SS SINK
190	1/2" SS SINK

ITEM	EQUIPMENT SCHEDULE
191	1/2" SS SINK
192	1/2" SS SINK
193	1/2" SS SINK
194	1/2" SS SINK
195	1/2" SS SINK
196	1/2" SS SINK
197	1/2" SS SINK
198	1/2" SS SINK
199	1/2" SS SINK
200	1/2" SS SINK

ITEM	EQUIPMENT SCHEDULE
201	1/2" SS SINK
202	1/2" SS SINK
203	1/2" SS SINK
204	1/2" SS SINK
205	1/2" SS SINK
206	1/2" SS SINK
207	1/2" SS SINK
208	1/2" SS SINK
209	1/2" SS SINK
210	1/2" SS SINK







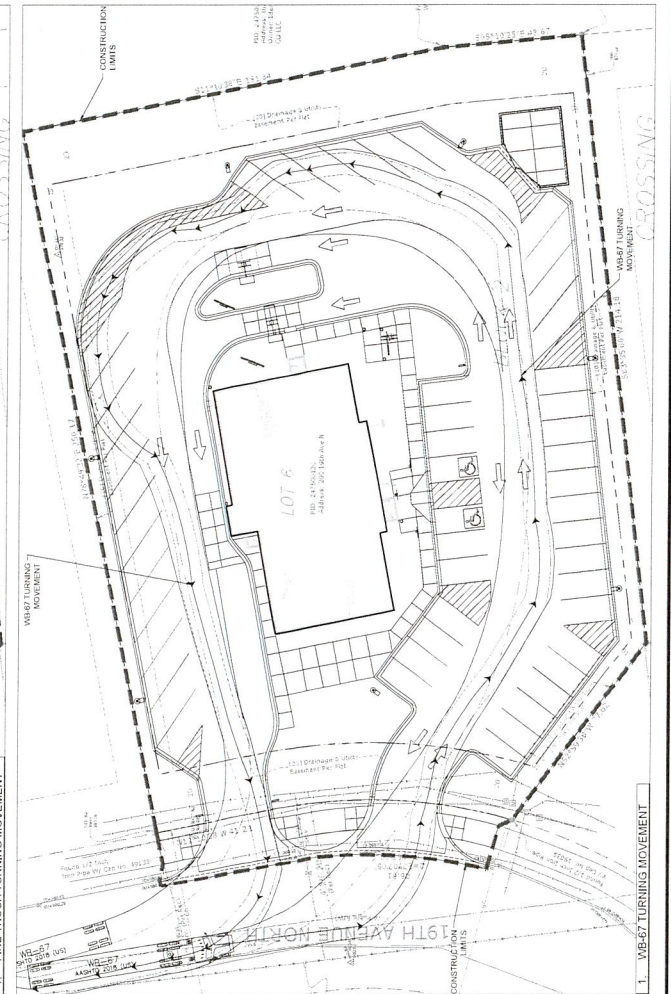
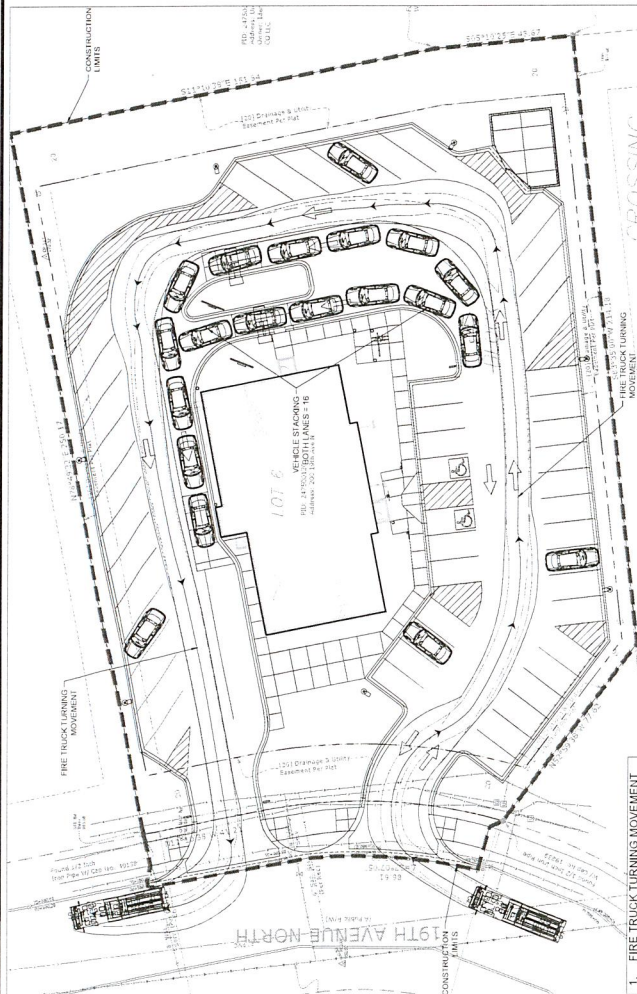
PRELIMINARY  
NOT FOR  
CONSTRUCTION

PRINCETON CULVER'S  
200 19TH AVE N, PRINCETON, MN 55371  
19TH AVE PRINCETON CULVERS LLC  
275 FARMWALK, SUITE 200, MINNETONKA, MN 55345

PROJECT  
DATE: 08/11/2021  
DRAWN BY: J. BRYAN  
CHECKED BY: J. BRYAN  
DATE: 08/11/2021  
PROJECT NO.: 21-0001  
SHEET NO.: 01

REVISION SUMMARY	DATE	DESCRIPTION

TURNING MOVEMENTS  
**C2.1**



SEE SHEET C2.0 FOR GENERAL  
SITE NOTES & LEGEND  
811  
Call before you dig.  
1-800-487-4629  
www.811.com



